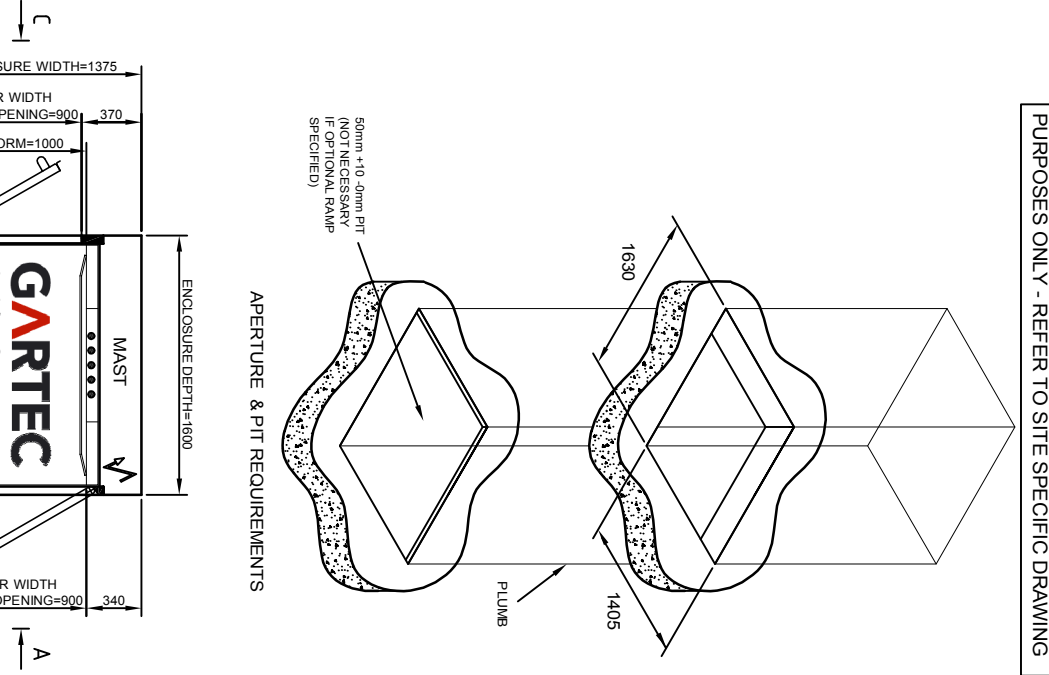
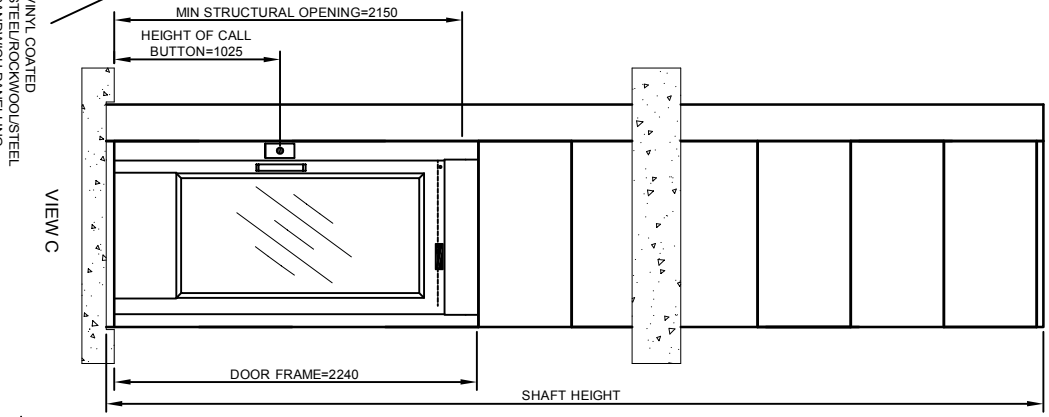
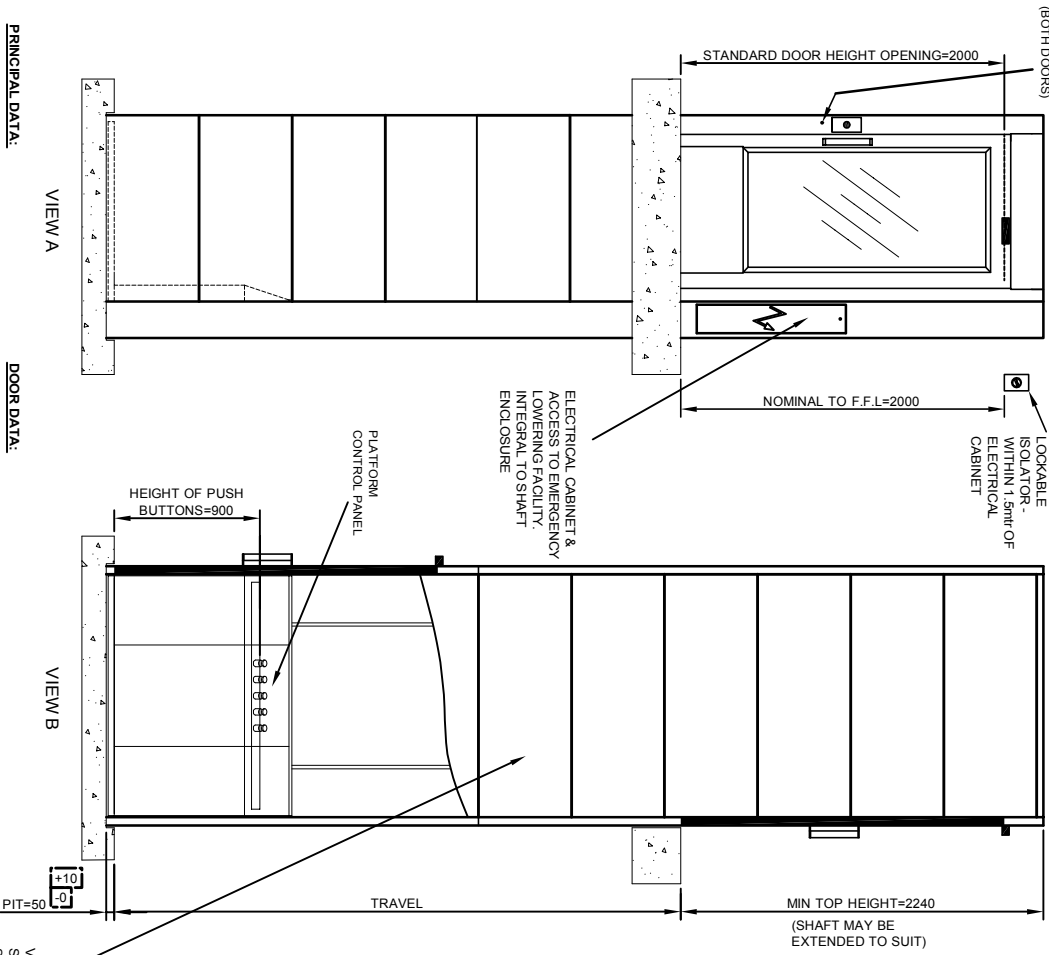


EMERGENCY RELEASE POINT (BOTH DOORS)

PREFERRED POSITION OF LOCKABLE ISOLATOR WITHIN 1.5M OF ELECTRICAL CABINET



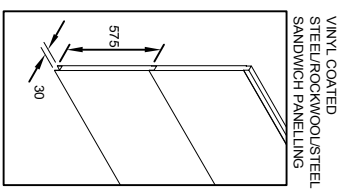
NOT TO BE USED FOR CONSTRUCTION - INDICATION PURPOSES ONLY - REFER TO SITE SPECIFIC DRAWING

PRINCIPAL DATA:

TYPE: ARTICO 6000 PLATFORM LIFT
 DRIVE SYSTEM: STATIC SCREW WITH ROTATING NUT
 CAPACITY: 410KG OR 500KG
 TRAVEL: VARIABLE
 NO OF STOPS: 2 SHOWN (UP TO A MAXIMUM OF 6 AVAILABLE)
 SUPPLY VOLTAGE: 400V 3PH 50HZ (SINGLE PHASE AVAILABLE)
 RUNNING CURRENT: 4.7AMP
 STARTING CURRENT: 18AMP
 STANDARD COLOUR: RAL 9003 WHITE
 (OTHER RAL COLOURS AVAILABLE)

DOOR DATA:

TYPE: GL TYPE SHOWN (ALTERNATIVES AVAILABLE)
 NO OF DOORS: 2 SHOWN (UP TO A MAXIMUM OF 6 AVAILABLE)
 FIRE RATING: AVAILABLE (NOT SHOWN)
 OPENING SIZE: 900 X 2000MM
 DOOR FRAME: INTEGRAL TO SHAFT ENCLOSURE
 DOOR/FRAME COLOUR: WHITE POWDER COATED RAL 9003
 DOOR GLASS: VARIABLE
 CLOSER: MANUAL TYPE SHOWN (AUTOMATIC VERSION AVAILABLE)
 FURNITURE: FITTINGS IN ANODISED ALUMINIUM



VINYL COATED STEEL/ROCKWOOL/STEEL SANDWICH PANELLING
 (POWDER COATED IF ALTERNATIVE OPTIONAL RAL COLOUR SPECIFIED)

UNLIMITED STOPS AVAILABLE (CONDITIONS APPLY)
 MAXIMUM TRAVEL OF 13 METRES

ARTICO 6000: 1000 PLATFORM, 2 STOP LIFT, THROUGH CAR

| | | | | |
|--|--|--------------------------|--------------|------------------|
| GARTEC An Artico Group company Midshires Business Park Smeaton Close Aylesbury Bucks HP19 8HL www.gartec.com | | Drawn by R.C. | Scale NTS | Date 06/06/14 |
| | | Drawing No. SALES-601 | Issue 1 | |